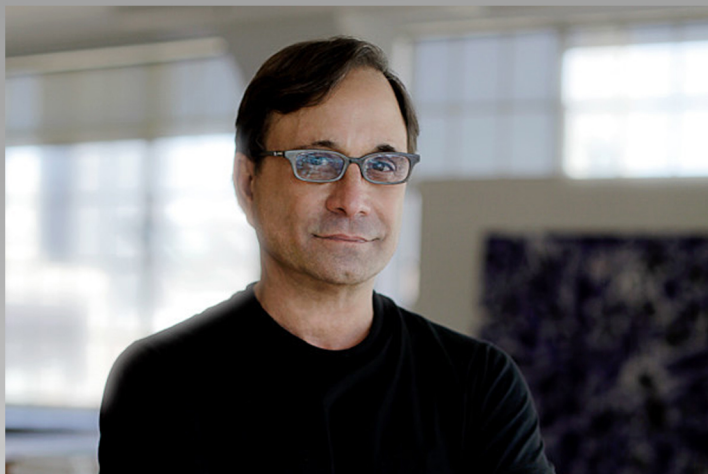


Serge Sorokko Gallery presents:



*Ross Bleckner:
Consciousness More Than Anything*



Ross Bleckner

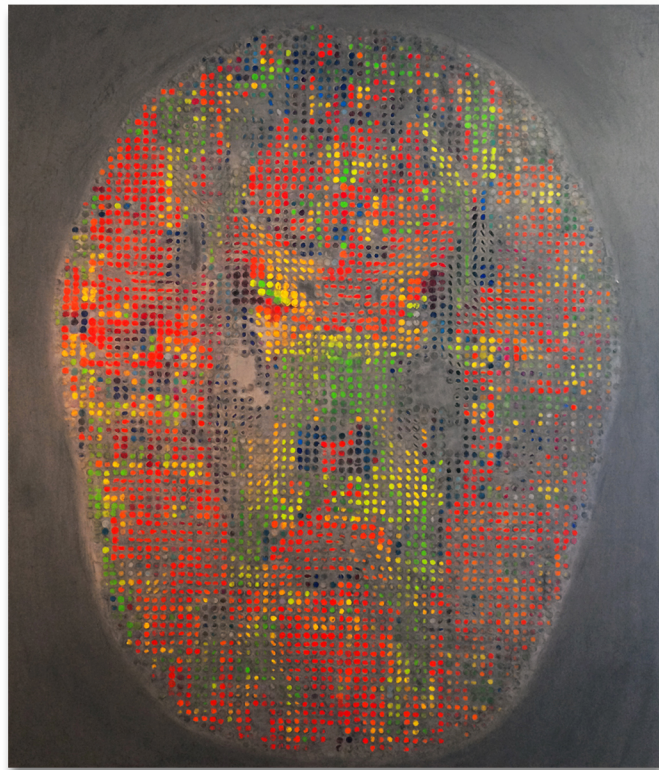
Serge Sorokko Gallery is pleased to present *Ross Bleckner: Consciousness More Than Anything*, a retrospective exhibition of paintings by internationally renowned artist, Ross Bleckner. This remarkable collection consists of recent as well as extraordinary earlier works, presenting a range of the artist's most iconic subject matters.

Ross Bleckner studied painting with Sol LeWitt and Chuck Close at New York University and earned an MFA from California Institute of the Arts. He emerged on the vibrant New York arts scene in the 1980s, along with Julian Schnabel, David Salle, Eric Fischl, Donald Sultan, and Jeff Koons as one of the fresh young artists redefining contemporary painting. His mid-career retrospective was presented in 1995 by the Solomon R. Guggenheim Museum, and accompanied by a monograph.

Bleckner is known for painting elegant emotional compositions full of color, light, and movement. He often employs a soft blurring of his images; the resulting effect is a sense of being in a moment of time actually passing in the present. "My work is elliptical. I think it's more sensitive to being open to different kinds of relationships, all the various routes that are possible to find a solution."

Paintings from his wildly popular series, *Flowers*, were included in the 2004 exhibition, *Flowers Observed, Flowers Transformed*, at the Warhol Museum in Pittsburgh. The *Flower* paintings are expressionistic predecessors to Bleckner's series of paintings on DNA, which are based on the molecular structure of cells.

Bleckner's work can be found in important museum collections including the Museum of Modern Art in New York, the Guggenheim Museum, the Whitney Museum of American Art, the San Francisco Museum of Modern Art, The Eli Broad Family Foundation in Santa Monica, the Baltimore Museum of Art, the Brooklyn Museum of Art, the Hirshhorn Museum of Art in Washington, D.C., the Museum of Contemporary Art, Los Angeles, the Museum of Contemporary Art, Chicago, and the Museo Nacional Centro de Arte Reina Sofia in Madrid, to name a few.



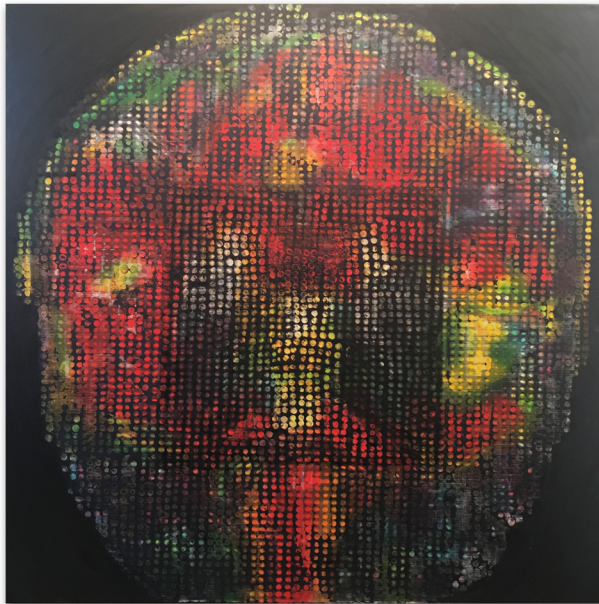
The Brain in the Room
2012
Oil on linen
84" x 72"
VIEW TO SCALE



Banding Patterns
2000
Oil on canvas
60" x 60"
VIEW TO SCALE



Untitled
2016
Oil on canvas
30" x 30"
VIEW TO SCALE



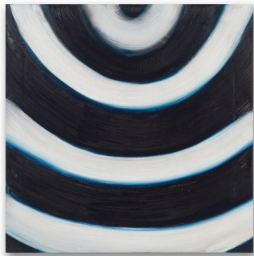
Bird Brain Black
2014
Oil on linen
60" x 60"
VIEW TO SCALE



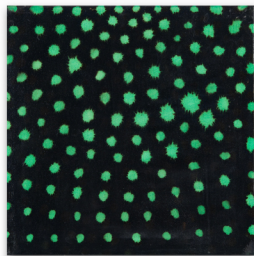
Untitled
2016
Oil on canvas
32" x 16"
VIEW TO SCALE



Untitled
1978
Oil on canvas
20" x 18"
VIEW TO SCALE



Untitled
2015
Oil on canvas
18" x 18"
VIEW TO SCALE



Untitled
2013
Oil on canvas
18" x 18"
VIEW TO SCALE



Untitled
2016
Oil on canvas
18" x 18"
VIEW TO SCALE

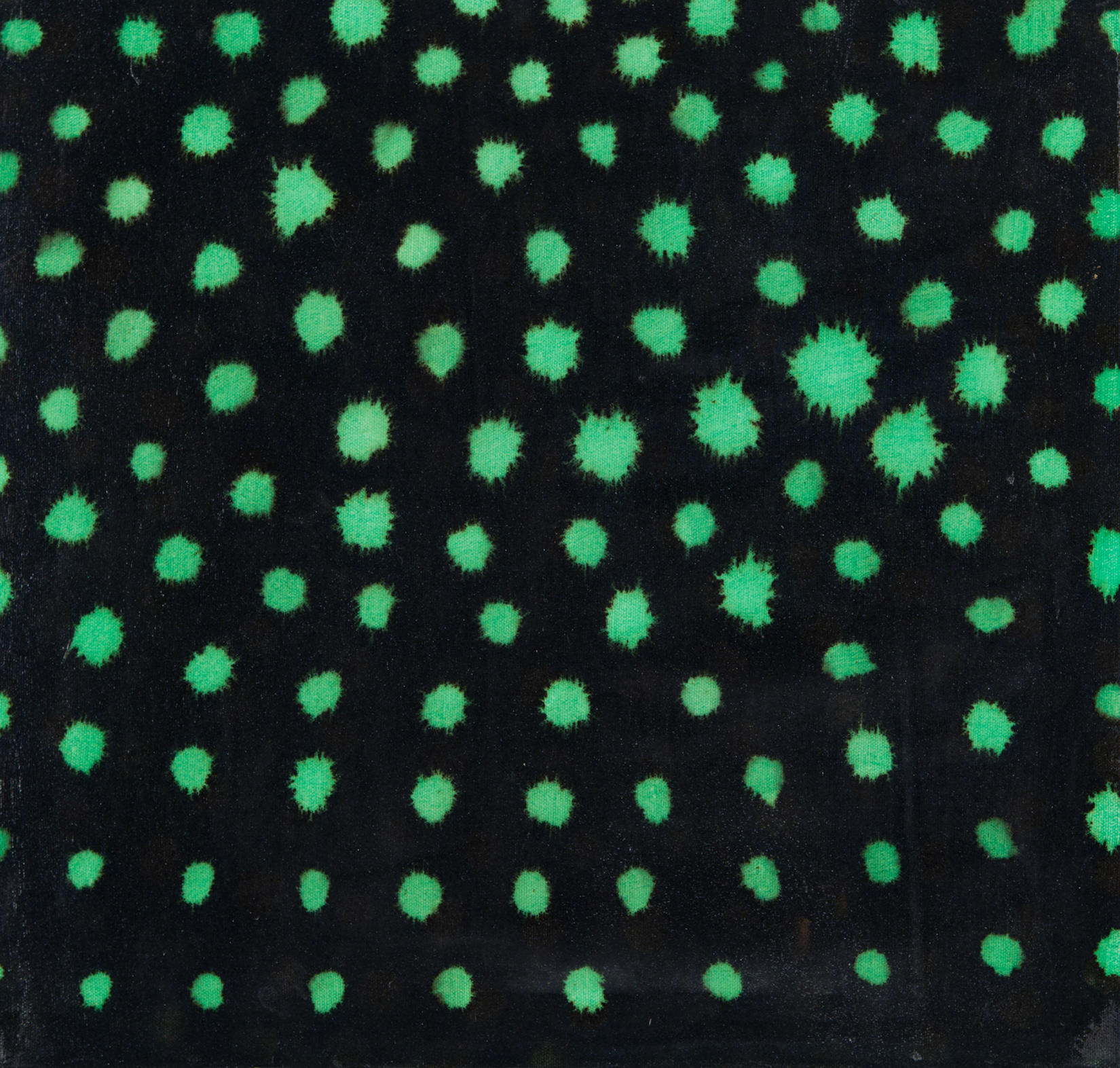


Untitled
2010
Oil on canvas
18" x 18"
VIEW TO SCALE



SELECTED PUBLIC COLLECTIONS

Albright-Knox Art Gallery, Buffalo
Baltimore Museum of Art, Baltimore
Bawag Foundation, Vienna, Austria
Museum Boymans-van Beuningen, Rotterdam
The Broad Art Foundation, Santa Monica
Brooklyn Museum, New York
Carnegie Museum of Art, Pittsburgh
Chase Manhattan Bank, New York
Citibank Art Collection, New York
Daros Collection, Zürich
Douglas S. Cramer Foundation, Los Angeles
Dannheisser Foundation, New York
Astrup Fearnley Collection, Oslo
Fisher Landau Center for Art, New York
General Mills, Golden Valley, Minnesota
Sammlung Goetz, Munich
Solomon R. Guggenheim Museum, New York
Hirshhorn Museum and Sculpture Garden, Washington, D.C.
Ho-Am Art Museum, Seoul
Jacksonville Art Museum, Jacksonville
The Jewish Museum, New York
Joslyn Art Museum, Omaha
Marx Collection, Berlin
Milwaukee Art Museum, Wisconsin
Museo de Arte Contemporanea, Seville
Museum of Contemporary Art, Chicago
Museum of Contemporary Art, Los Angeles
Museum of Fine Arts, Boston
The Museum of Modern Art, New York
Orlando Museum of Art, Florida
Prudential Life Insurance, Newark
Museo Nacional Centro de Arte Reina Sofia, Madrid
The ROC Group, Paris
Rubell Family Collection, Miami
The Saatchi Gallery, London
San Francisco Museum of Modern Art, California
Smith, Klein and Beckman, Swedeland, Pennsylvania
Tsurukame Corporation, Nagoya
Tweed Museum of Art, University of Minnesota, Duluth
Walker Art Center, Minneapolis
Whitney Museum of American Art, New York



Serge Sorokko Gallery

365 Grant Avenue, San Francisco, CA 94108
(415) 421-7770
www.sorokko.com

For further inquiries, contact Larry Block, Director, at: larryblock@sorokko.com